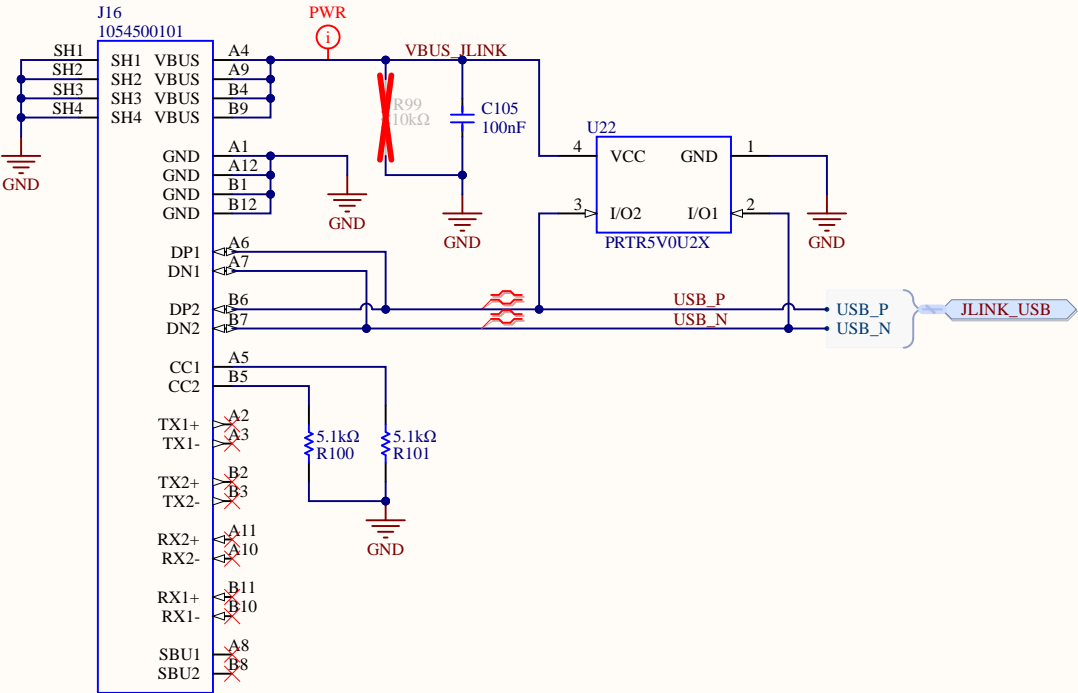
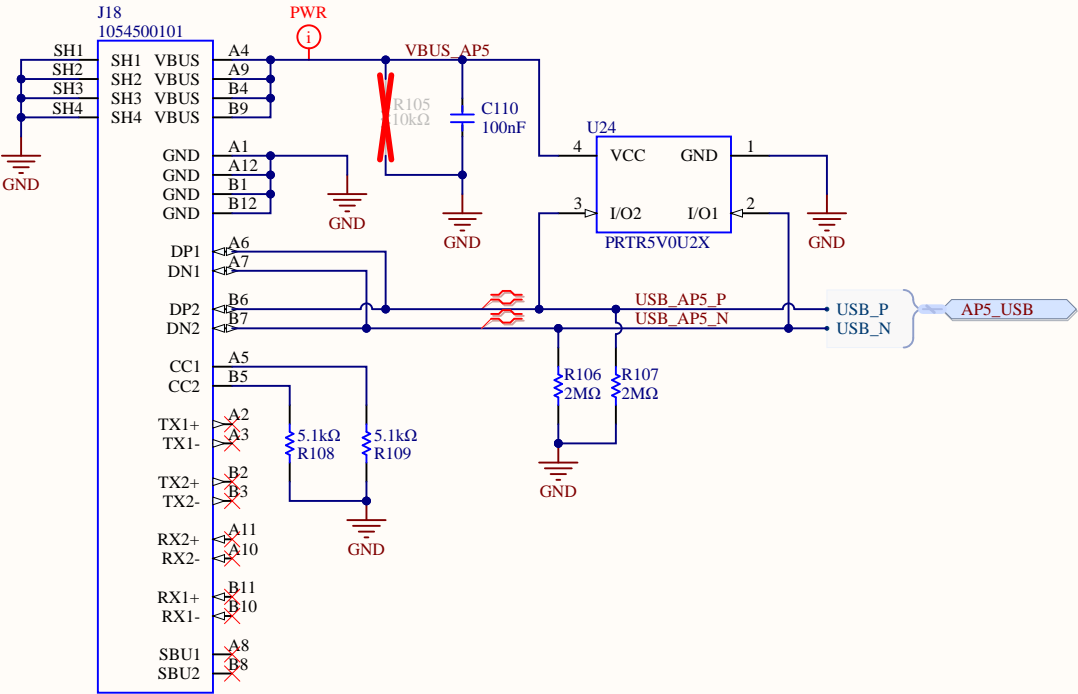


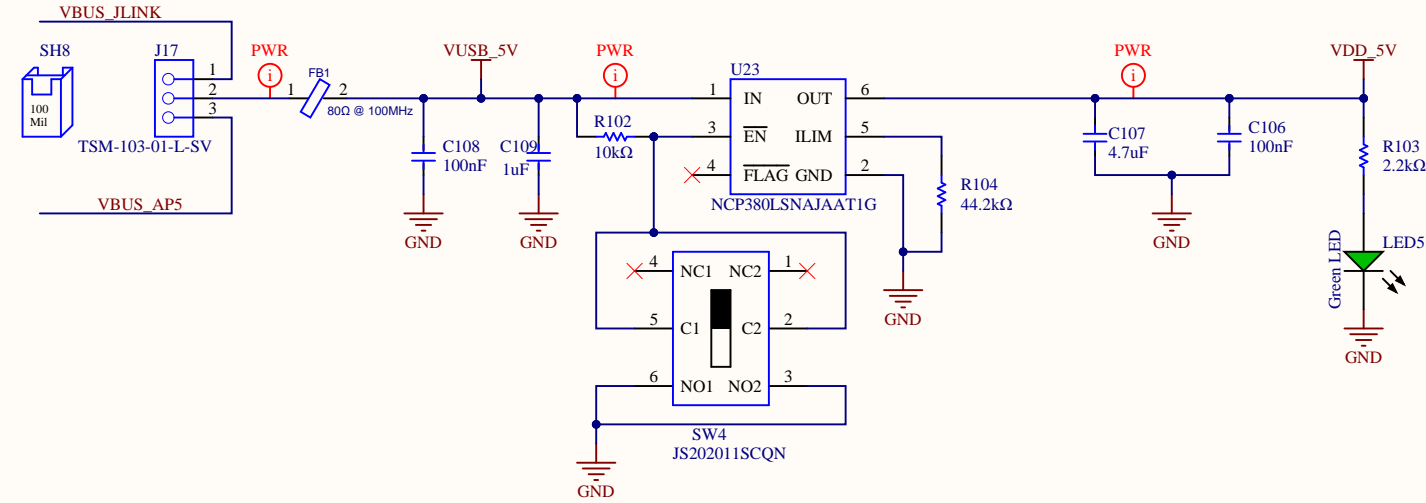
USB-C Connector



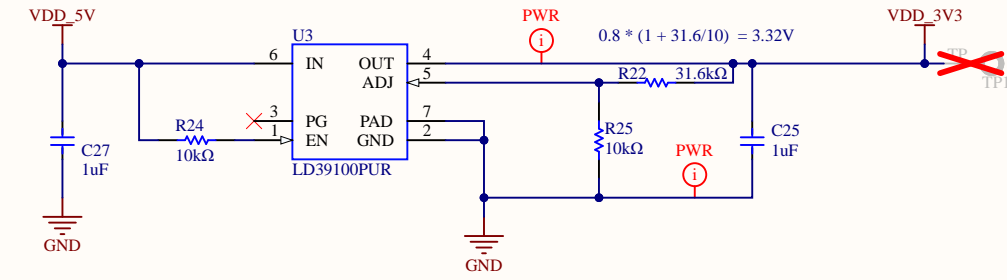
AP5 USB-C Connector



5V Source Select & USB Protection Circuit

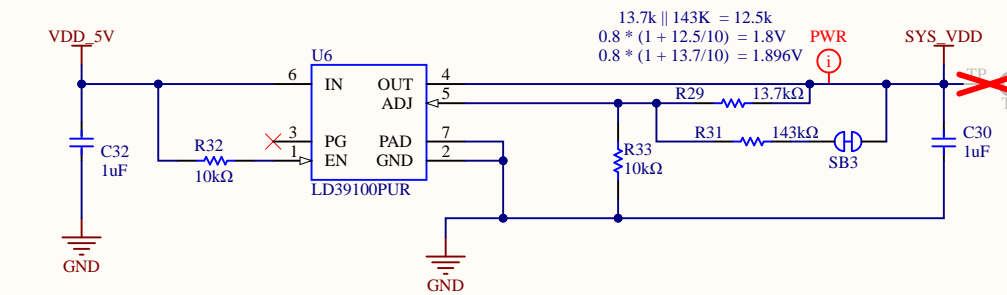


3.3V Supply

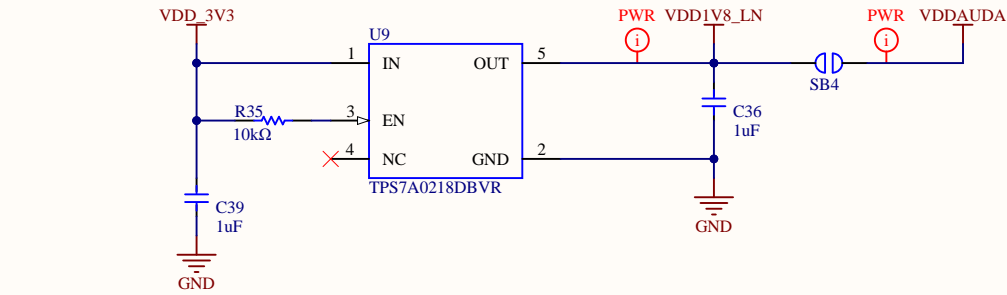


1.8V Supply

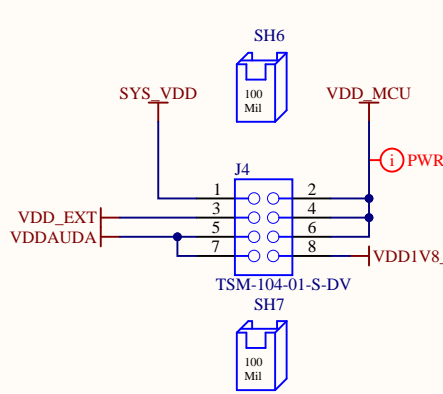
CUT SB2 for 1.9V



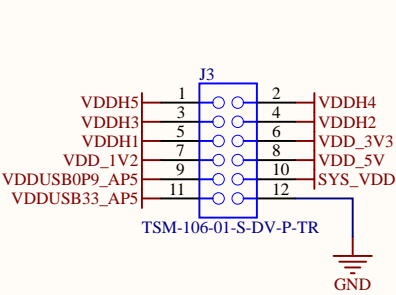
1.8V Low Noise Supply



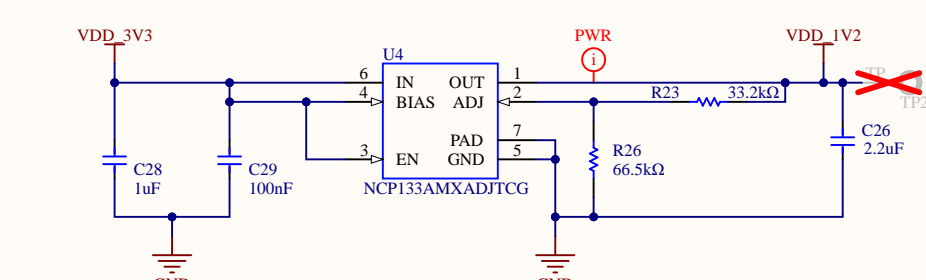
Supply selection



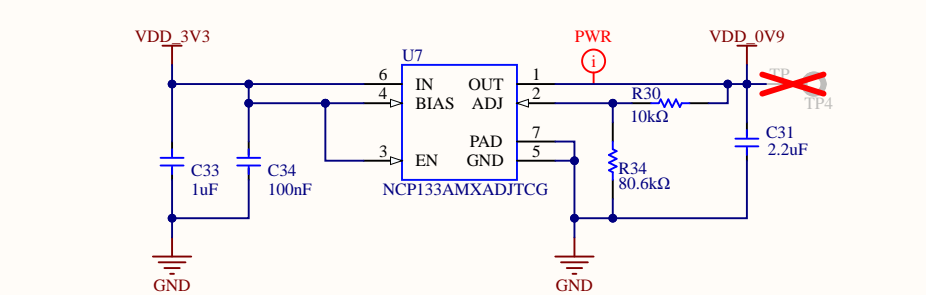
Supply visibility



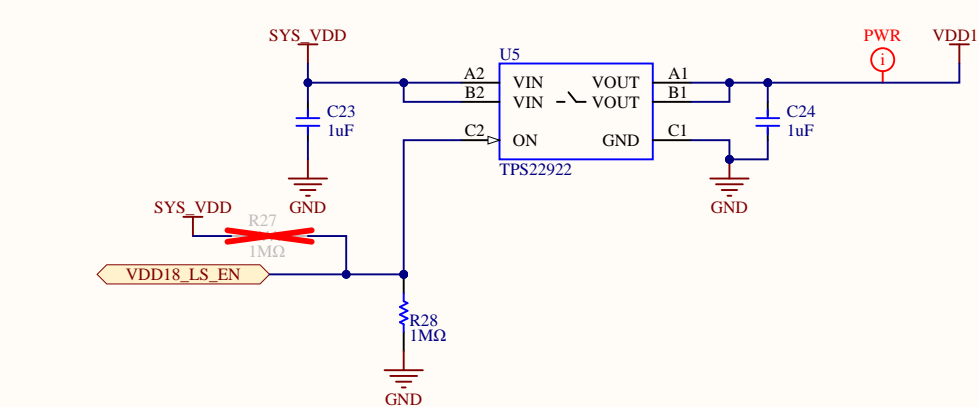
1.2V Supply



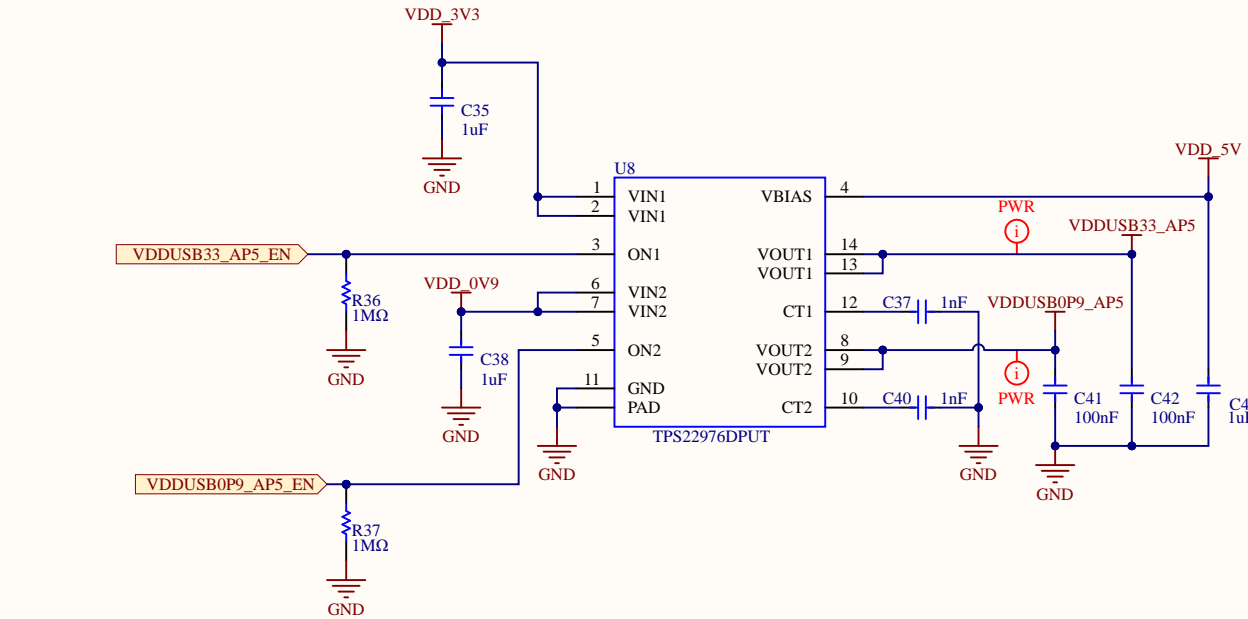
0.9V USB Supply



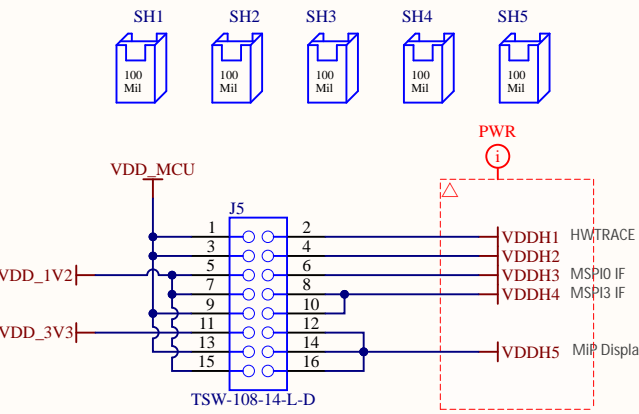
Display Controller Loadswith



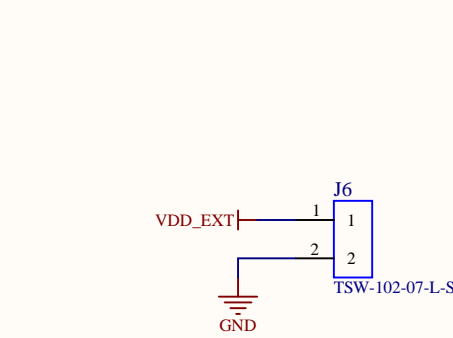
USB Sequencing for Apollo5



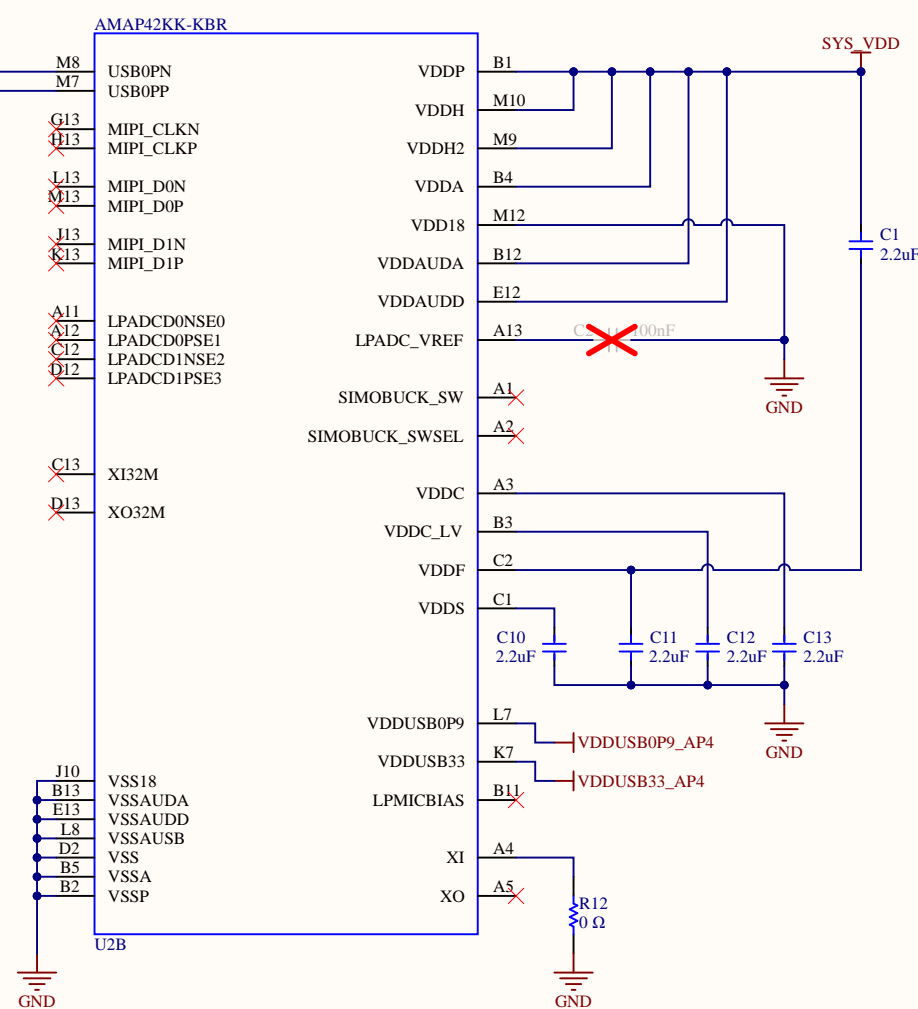
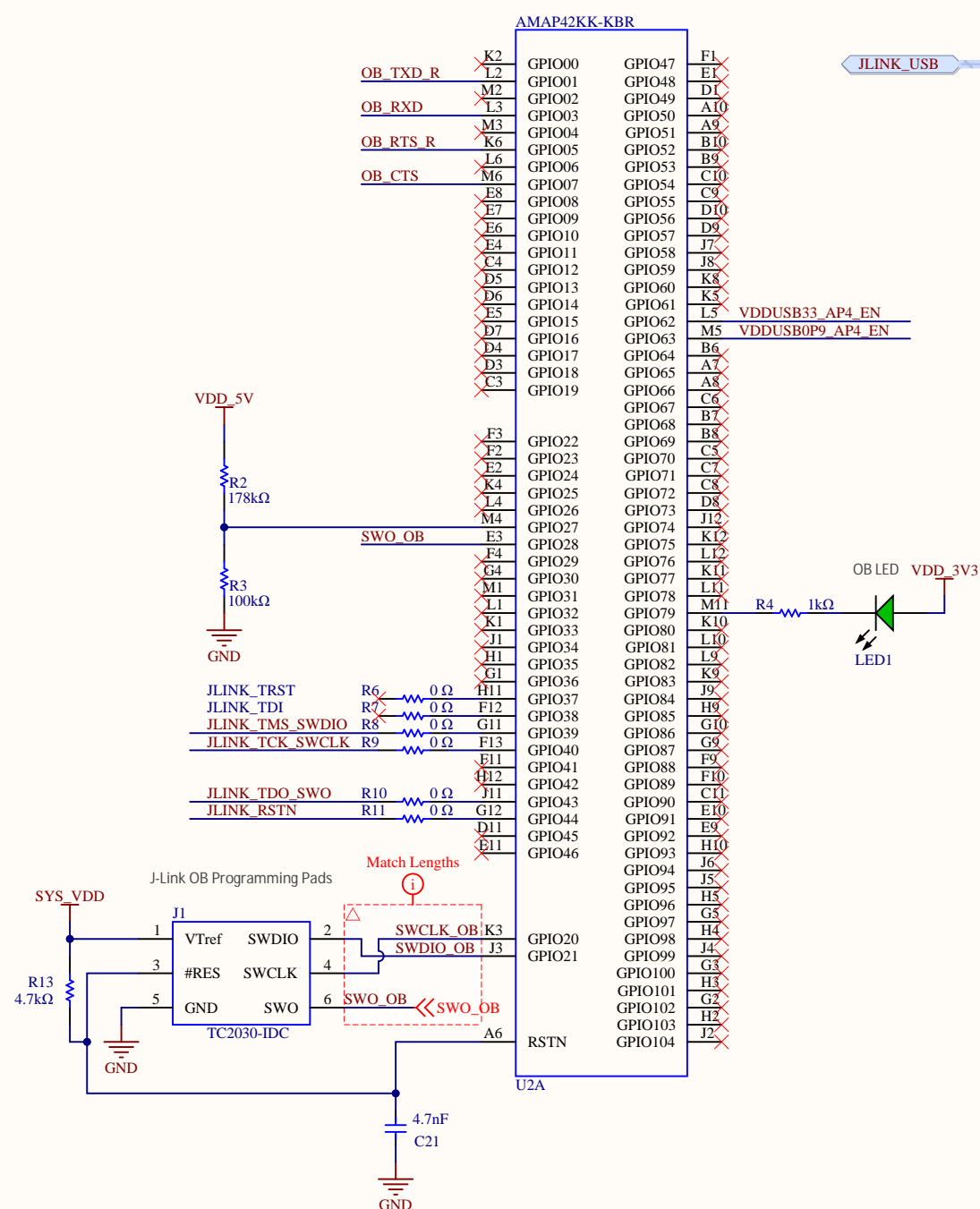
Power Configuration Header



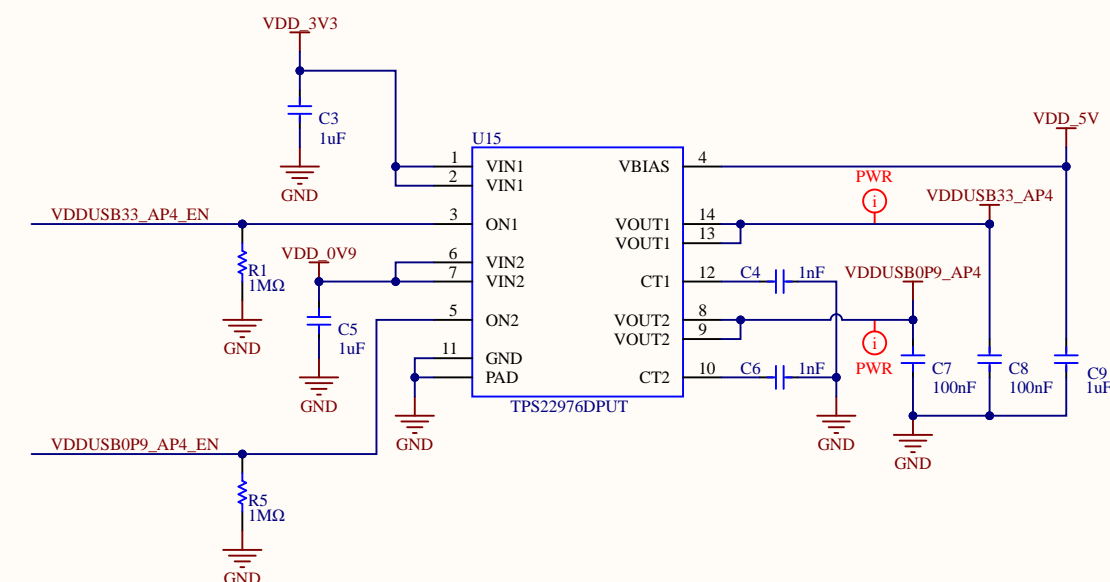
External Supply Input



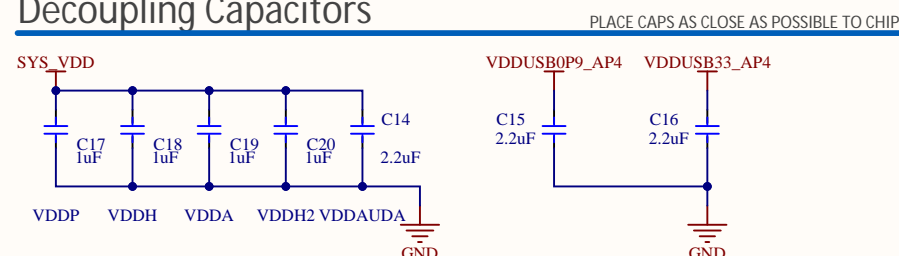
JLINK OB Debugger



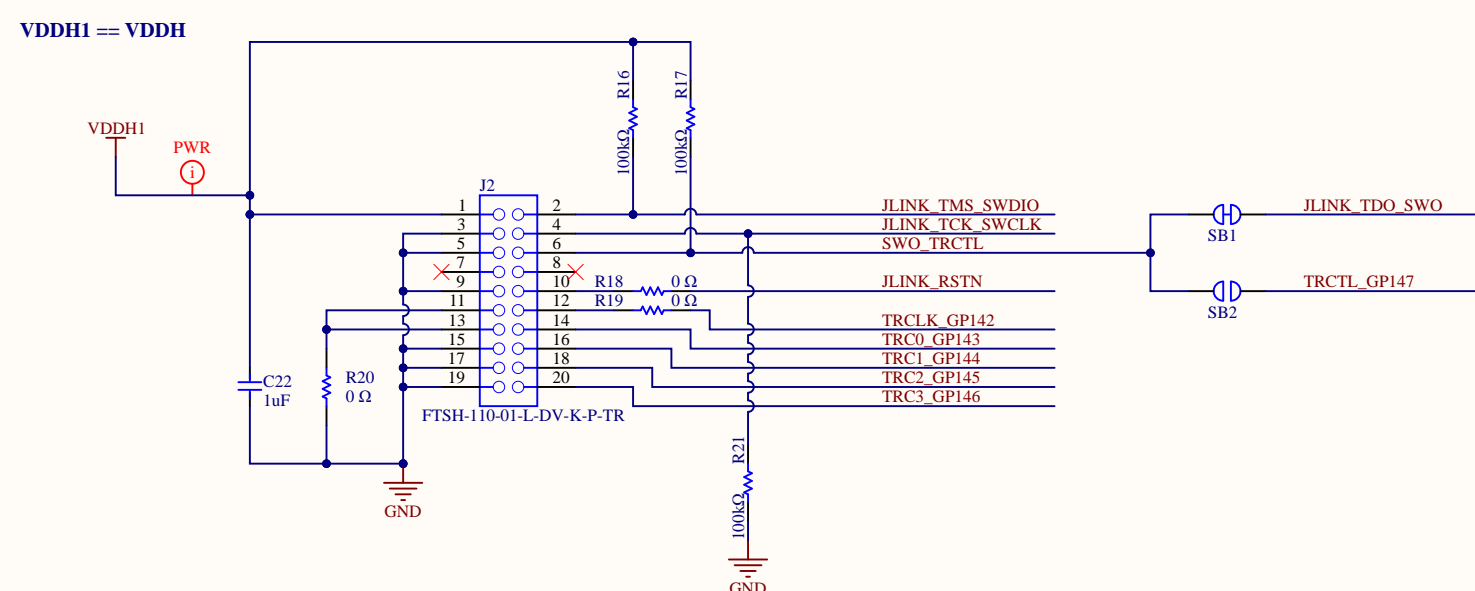
USB Sequencing for OB



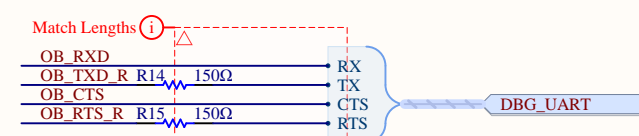
Decoupling Capacitors



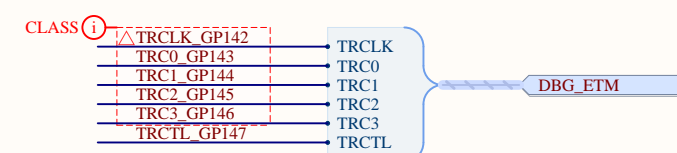
20Pin Cortex Debug + ETM



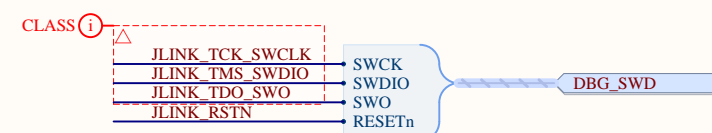
VCOM Interface



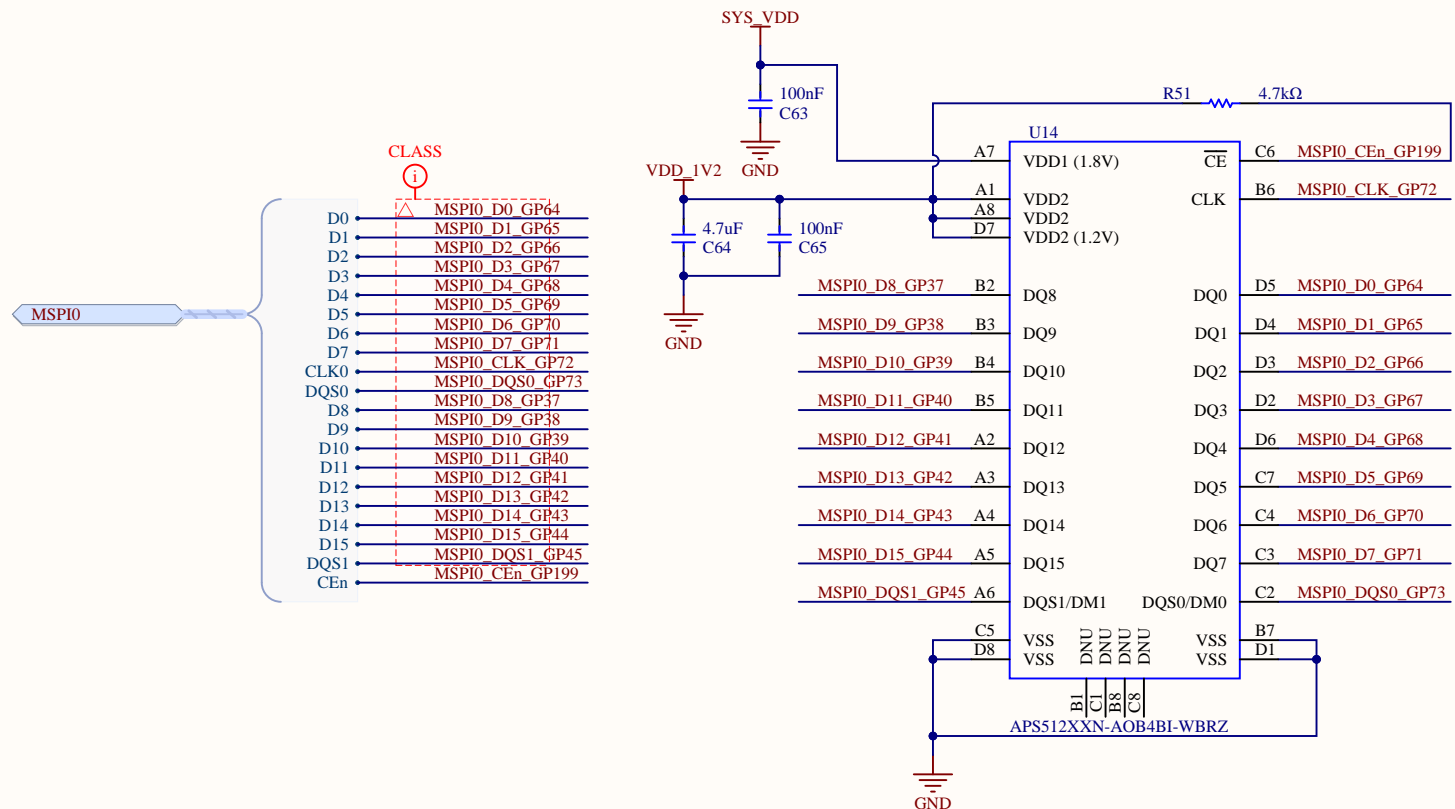
ETM Interface



Target Debug Interface



MSPI0 - x16 - AP PSRAM



Title
Apollo510 EVB

Revision
2.2

Sheet Name
MSPI0 - x16 - PSRAM

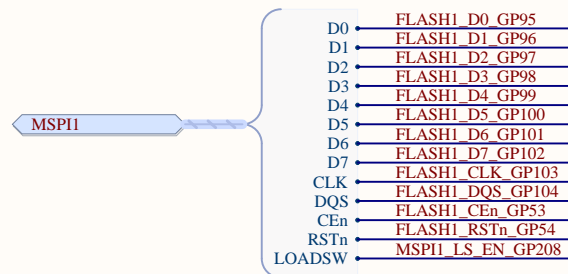
Sheet 6 of 10

Date
5/28/2025

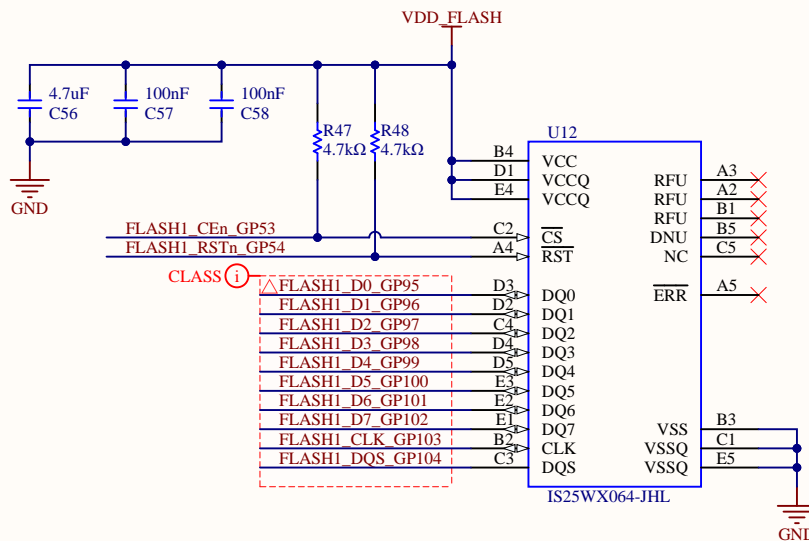
Number
AP510EVB

This document contains information proprietary to Ambiq and shall not be used, reproduced, or disclosed to others, in part or in whole, without express written permission from Ambiq.

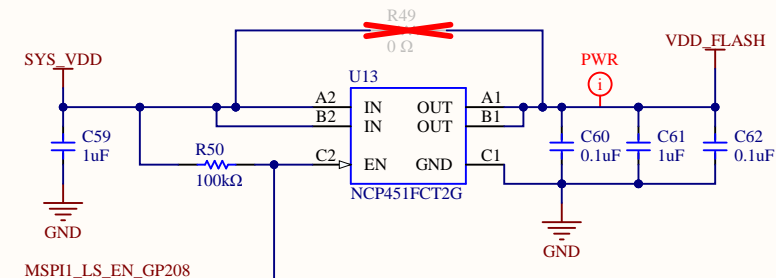
MSPI1 Signal Harness



MSPI1 - x8 - FLASH - 200MHz



Flash Load Switch



Title
Apollo510 EVB

Revision
2.2

Sheet Name
MSPI1 - x8 - FLASH

Sheet 7 of 10

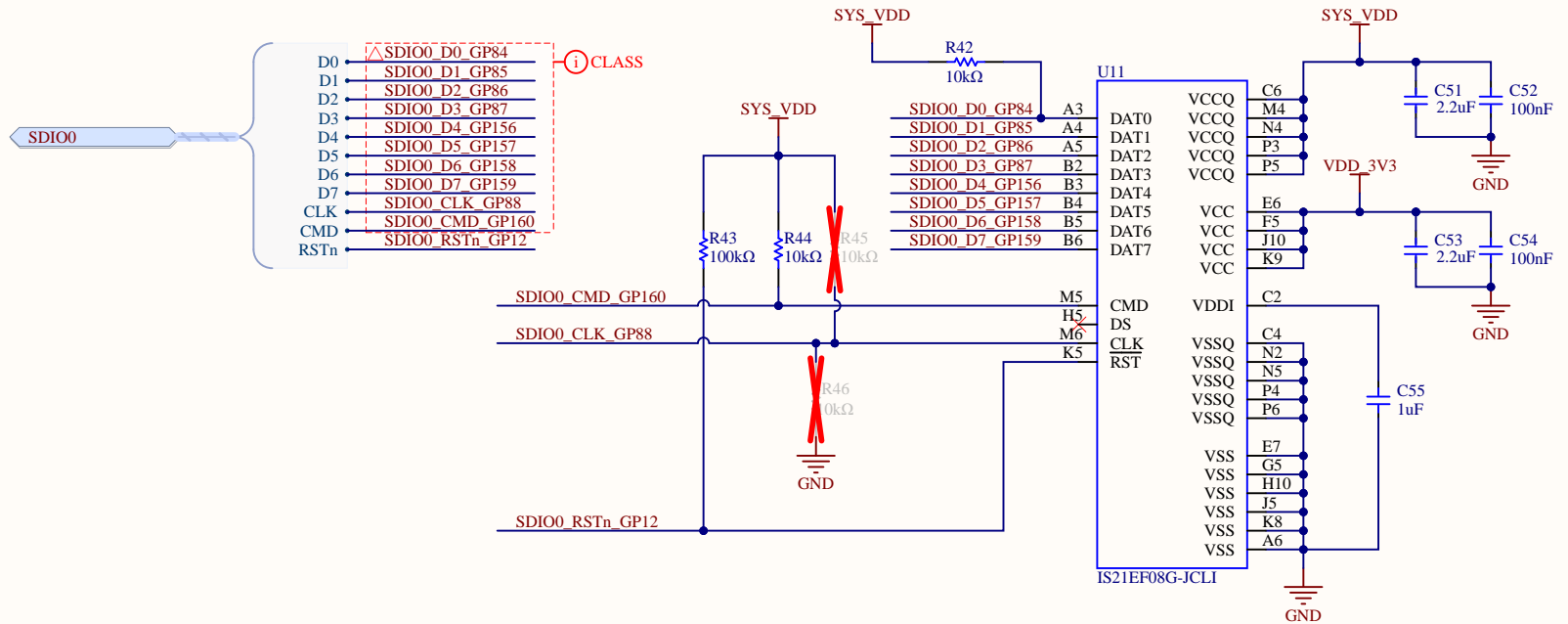
Date
2/12/2025

Number
AP510EVB

This document contains information proprietary to Ambiq and shall not be used, reproduced, or disclosed to others, in part or in whole, without express written permission from Ambiq.

SDIOs Ports

eMMC0



Title
Apollo510 EVB

Revision
2.2

Sheet Name
SDIO_IF

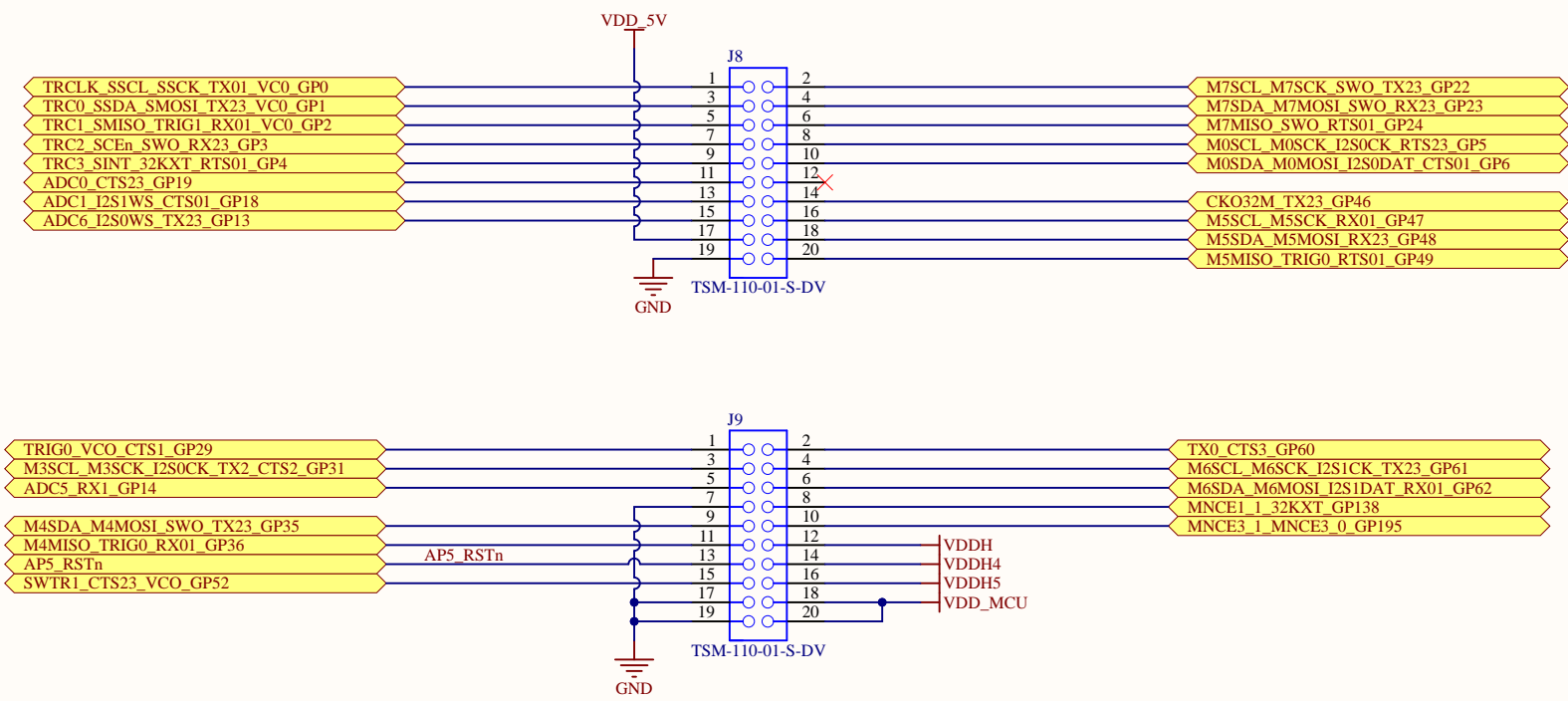
Sheet 8 of 10

Date
2/12/2025

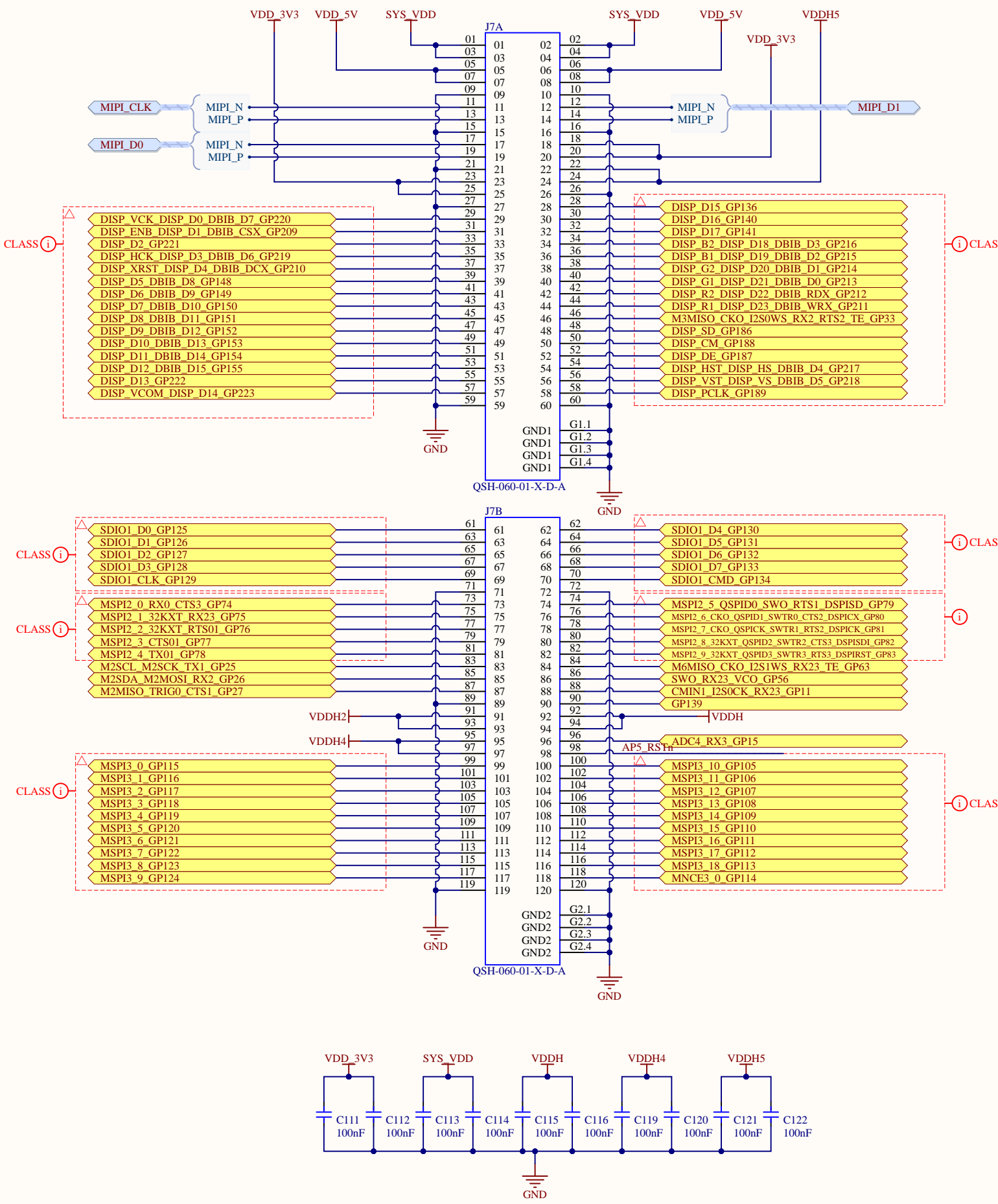
Number
AP510EVB

This document contains information proprietary to Ambiq and shall not be used, reproduced, or disclosed to others, in part or in whole, without express written permission from Ambiq.

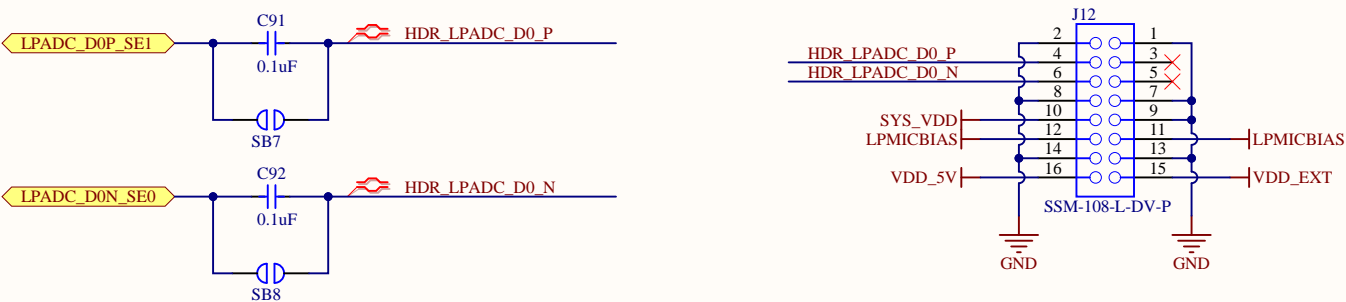
GPIO headers and testpoint arrays



High-speed header



LPADC Solder Bridge Options



ClickBoard Interface

